

Inspection procedure for 88U55x and 88U56x mounting or disc area cracks

The use of star-shaped hubs, unapproved aftermarket components, painted hubs, overloading, and poor maintenance practices reduce the life expectancy of an Alcoa® wheel. Due to unique loading in electric bus applications, we are highlighting this specific part number and condition for focused inspection.

PART NUMBERS

88U55x and 88U56x

INSPECTION AREA

For part numbers starting with 88U55x and 88U56x, inspect to identify any cracks on the mounting or disc area on both the open and closed ends of the wheel.



Crack in Mounting
or Disc Area



Closed End

Open End

WHEN

Inspect the open and closed end disc area when: (1) reviewing the steer and drive axle / wheel end components during standard inspections; (2) investigating vibration or ride disturbances; or (3) changing or repairing tyres.

HOW TO INSPECT

- 1 Remove steering axle and drive axle wheels from vehicle.
- 2 Clean the mating face of the wheel (disc area full 360°) of both open and closed end removing dirt, oxidation and any paint (Service Manual for Alcoa® Wheels, Section 10, Page 42 to 46).



- 3 Inspect full 360° of open and closed end disc area for any visible cracks or depressions.



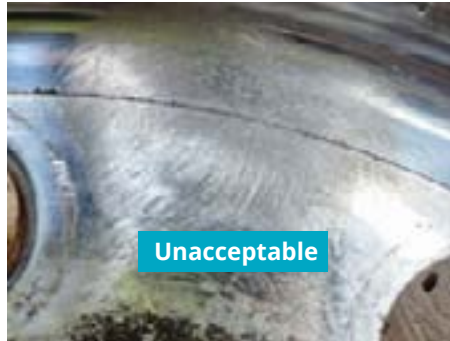
- 4 If a distinct 360° line is observed proceed to clean this area with sandpaper (flapper wheel) with grit size between 80 and 150.

- 5 Inspect area and if the distinct line is no longer observed the wheel is acceptable to return to field use.



5

If a distinct line can still be observed this is an unacceptable condition. Remove the wheel from service and submit to the Howmet Fleet Service Center in Europe for warranty replacement, if eligible, via claim wheel registration form: <https://alcoawheels.com/Europe/en/fleet-service-center/>



For further details and information about servicing wheels, consult the Service Manual for Alcoa® Wheels, section 13. Wheels in service:
<https://www.alcoawheels.com/alcoawheels/europe/en/pdf/Service-manual-for-Alcoa-Wheels-EN.pdf>

Howmet offers a product called Discmate which is used by Commercial Vehicle fleets to reduce wear and corrosion by eliminating contact at the wheel and hub interface.

HOWMET WHEEL SYSTEMS

info.wheels@howmet.com
www.alcoawheels.eu

Alcoa® Wheels¹ is a product brand of Howmet Aerospace.

© 2025 Howmet Aerospace Inc. All rights reserved.

1. The "ALCOA" name and geometric symbol are registered trademarks of Alcoa USA Corporation and are licensed to Howmet Aerospace Inc. and its subsidiaries.

This brochure may not reflect the most recent development and accuracy of the information herein is not guaranteed. Howmet Aerospace reserves the right to change information in this brochure, including the technical characteristics and designs of Alcoa® wheels.

