



**ALCOA**  
WHEELS



# PRODUCT SPEC GUIDE

Published July 2023



Alcoa® Ultra ONE® Wheel with MagnaForce® Alloy

**ONLY  
16 Kg**

# World's Lightest, Strongest Heavy-Duty Truck Wheel.



## Alcoa® Ultra ONE® Wheel with MagnaForce® Alloy Our Lightest, Strongest 22.5" X 8.25" Wheel EVER.



### Lightest Wheel in the Industry

- Only 16 Kg
- Save up to 2.1L of fuel per 1,000 km when converting from steel on all positions
- 10-285 Standard fitment



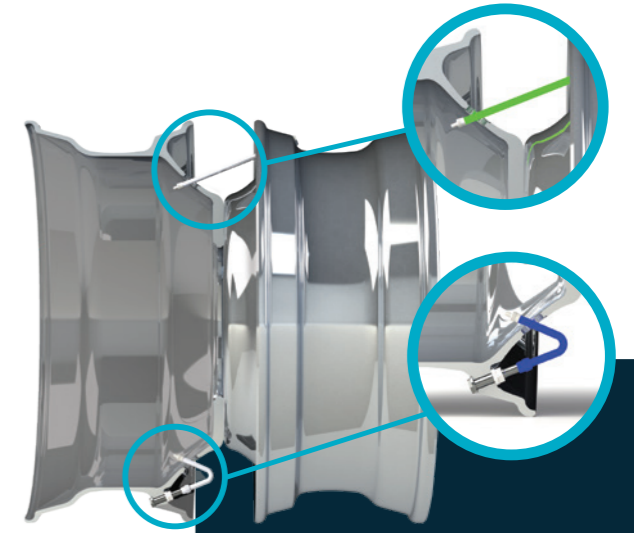
### Patent-Pending Wheel Design

- No hand holes
- Impact tested
- Designed for strength



### Innovative vHub™ Bore Technology

- Up to 64% less contact area than existing wheels on the market.
- Minimizes hub-to-wheel contact area to reduce corrosion.



### Strongest Wheel Yet

- With proprietary MagnaForce® alloy
- 3,355kg. load rating

### Maintenance Friendly Valve System

- Two 25mm valve access holes for dual mounting and dual inflation. 60MS-00 valves designed for ease of inflation and pressure checks.
- Works with ATIS and Halo systems.
- Brings both inner and outer dual valve into wheel well for easy access.

Valve system not included with the wheel. Order separately

## MAGNAFORCE®

Each Alcoa Ultra ONE® wheel is forged from our MagnaForce® alloy for a lighter wheel that's 17% stronger than the current industry standard 6061 alloy.

MagnaForce® is the first new alloy for forged aluminium wheels since 1968.



Meets SAE J1865 and J2803 drum and disc brake profiles



TAKE A LOOK AT THE COMPLETE ALCOA® WHEELS SPEC GUIDE.

# Alcoa® ULT36x 22.5" x 8.25" Wheel

# NO MORE POLISHING

Alcoa Dura-Bright® EVO Wheels

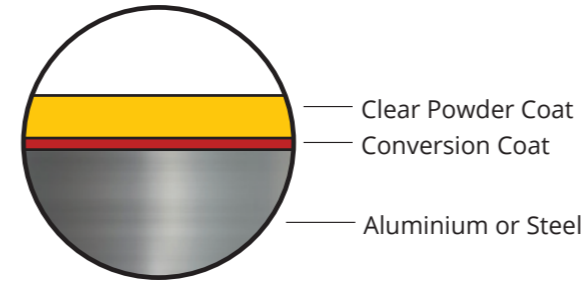


## THE SURFACE TREATMENT YOU CAN COUNT ON TO KEEP YOUR WHEELS LOOKING GREAT FOR THE LONG RUN.

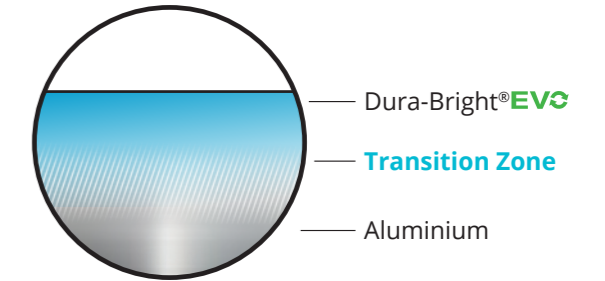
Dura-Bright® EVO Wheels feature a new and improved surface treatment that stands stronger against tough conditions – without the need to polish. And when it's time to clean, a simple soap and water wash gets you back on the road.

# BREAKTHROUGH TECHNOLOGY

## CONVENTIONAL COATING



## DURA-BRIGHT® EVO



## UNBEATABLE RESILIENCE

- **10x more resistant** to corrosion caused by road salts and weather elements
- **3x more resistant** to harsh chemicals

On ordinary wheels, a coating is typically applied as a layer that sits on top of the wheel surface. When scratched, water and salt can penetrate the coating, resulting in corrosion and further deterioration.

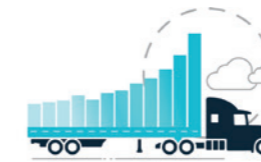
Patented Dura-Bright® EVO penetrates the aluminium, forming a molecular bond that becomes an integral part of the wheel. It prevents cracking, peeling and filiform corrosion often seen on coated wheels.

**The benefits to you?** Wheels that keep their shine and stay looking newer for longer, even after hundreds of washes\* and thousands of miles.

## ALL ALCOA ALUMINIUM WHEELS HAVE



Best-in-Class Warranty



Increase Payload.  
Improve Fuel Efficiency.



Easier, faster and safer maintenance.



Best-in-Class customer service and training



Lightest, Strongest and Largest Family of Aluminium Wheels



Stronger than Steel One-piece forged Aluminium



Increased Resale Value & 100% Recyclable

\* Alcoa Dura-Bright® EVO Wheels should be cleaned in accordance with the Alcoa Dura-Bright® Cleaning Guide.

Alcoa® Dura-Black™ Wheels

# BLACK IT OUT.

The same benefits of all lightweight Alcoa aluminium wheels, but with serious swagger.



22.5" x 9.00"  
89U64BLK

22.5" x 8.25"  
ULTRABLK

22.5" x 12.25"  
82462BLK

## WITH ALL THE PREMIUM ALCOA FEATURES

- Precision laser-etched Alcoa Dura-Black™ logo
- Two-toned rim flange and mounting surface for extra protection during mounting and while in use on the rig.
- Colour-matched high-quality valve stem.
- Colour-matched One-Piece Hub Cover Systems, specifically designed for Dura-Black™ Wheels in steer and drive positions, complete the look.
- Dura-Black™ Wheels meet or exceed rigorous OEM testing that's been expanded to match both the durability and appearance requirements of this unique wheel.

## SURFACE OPTION CODES

Alcoa aluminium disc wheel mounting dimensions are consistent with SAE J694 or ISO 4107 as applicable. The finish for Alcoa Wheels is specified by replacing the 6th digit "x" shown in the part number with the appropriate finish option. Finishes are defined as:

- |   |   |
|---|---|
| 0 - Brushed finish on both sides as applicable*       | 7 - LVL ONE® finish on both sides as applicable*                                |
| 1 - Polished outside only                             | 8 - LVL ONE® finish on both sides<br>(reference data table for offset position) |
| 2 - Polished inside only<br>(same side as roll stamp) | 9 - Brushed finish on both sides<br>(reference data table for offset position)  |
| 3 - Polished both sides                               |   |
- \*0 and 7 finish options are determined by inset or outset mounting positions and may not be finished on both sides. Reference the Technical Data overleaf for offset position and available finish options.



**Dura-Black™ Wheels** are identified by adding "BLK" at the end of the regular part number.

**Dura-Bright® Wheels** are identified by adding "DB" at the end of the regular part number.

**Dura-Flange®** Wear Protection Wheels are identified by adding "DF" at the end of the regular part number.

**The Dura-Bright® and Dura-Flange®** Wear Protection options together are identified by the "DD" suffix.

*Available options for each part number are defined in the Available Finishes column.*

### Additional Information:

- Dura-Bright® Wheels shine without polishing. Just wash with soap and water.
- Do not polish or clean Dura-Bright® Wheels with abrasives. Do not clean any Alcoa wheels with abrasives.
- Do not exceed maximum wheel load. Always compare OEM vehicle load rating to maximum wheel load rating.
- Do not overinflate. Refer to tyre manufacturer's recommendation for proper tyre pressure.
- Before mounting the tyre, perform a wheel fitment check to ensure proper clearance from obstructions.
- Some wheels may bear part numbers not shown in this Spec Guide. Before servicing these wheels, contact your Howmet Wheel Systems wheel representative for proper load, inflation and part compatibility.
- Outset (positive) / inset (negative) – The distance from the rim centerline to the mounting face of the wheel. Inset (negative) places the rim centerline inboard of the mounting face and outset (positive) places the rim centerline outboard of the wheel mounting face. (Outset is also half dual space for dual wheels.)
- Check with vehicle manufacturer or axle manufacturer before retrofitting to outset wide base wheels to ensure compatibility with axle and wheel end components. P/N 84U62x is not recommended for use on N-Spindle trailer axles.
- For wheels diameter 19.5" and below that are packaged with brand new hardware, the included hardware must be used. In this case, do not use your vehicle's original lug nuts or bolts. Keep a set of your original lug nuts or bolts in your vehicle in case of potential future need of mounting a spare wheel.
- P/Ns 88565x and 98565x are Alcoa Severe Service® Wheels.
- To obtain information about free training on proper installation and maintenance procedures, contact Howmet Wheel Systems Australia at 1800 955 191 or on the web at [alcoawheels.com.au](http://alcoawheels.com.au)
- Details about accessories can be found after the Technical Data pages in this catalogue.







# Accessory Products

## Hub Cover System



### One-Piece Hub Cover System for 10 Hole, 285.75mm and 22.5"

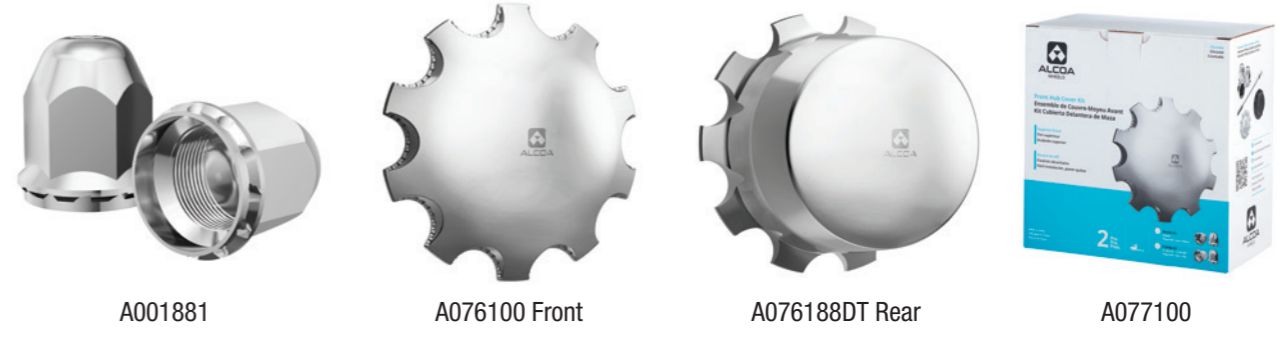
Part No.	Description	Wheel Type	Finish
A086200	Front Axle Kit includes: Two front covers and one removal tool.	Hub Piloted	Chrome
A087200	Rear Axle Kit includes: Two rear covers and one removal tool.	Hub Piloted	Chrome
A000800	Removal Tool		



### Wheel Hub Cover Kit - suits Screw on Nut Cover

Part No.	Description/Application	Wheel Type	Nut Cover
A076185*	Front Hub Piloted Hub Cover Kit - includes 1 Hub Cover, 10 Screw on Hug-A-Lugs®, 1 Wrench Fitting: Cover is secured by screwing the 001851 directly onto stud threads.	Hub Piloted	33mm - 001851
A077185*	Rear Hub Piloted Hub Cover Kit - includes 1 Hub Cover, 10 Screw on Hug-A-Lugs®, 1 Wrench Fitting: Cover is secured by screwing the 001851 directly onto stud threads.	Hub Piloted	33mm - 001851

\*Require a minimum of 4 threads per stud for fitting



### Wheel Hub Cover Kit - suits Clamp Type Cover

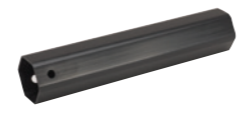
Part No.	Description/Application	Wheel Type	Nut Cover
A076188	Front Hub Piloted Hub Cover Kit - includes 1 Hub Cover, 10 Screw on Hug-A-Lugs® with Clamps, 1 Wrench Fitting: Cover is secured by screwing the 001881 onto the inner clamp. Inner clamp is placed on stud threads.	Hub Piloted	33mm - 001881
A077188	Rear Hub Piloted Hub Cover Kit - includes 1 Hub Cover, 10 Screw on Hug-A-Lugs® with Clamps, 1 Wrench Fitting: Cover is secured by screwing the 001881 onto the inner clamp. Inner clamp is placed on stud threads.	Hub Piloted	33mm - 001881

# Hug-A-Lug® Nut Covers

Heavy Duty Chrome Accessories

## Hub Cover System Cap Nut Cover Wrench

Part No.	Description
A00600	Cap Nut Cover Wrench for Hub Piloted Hug-A-Lugs®



## Hug-A-Lug® Nut Covers 33mm Hex 2 Piece Flange Nuts (Hub Piloted Wheel) Heights 27-31mm

Part No.	Description	Finish
A001851	For 33mm Wheel Nut -Screw Direct Onto 22mm - ea	Chrome
A001811	For 33mm Wheel Nut -Push-on Type - ea	Chrome
A188000C	Black Interlocking Clip - ea	Black
A001881	Off-White Interlocking Clip - ea	Off-white
A001813	For 33mm Hex Flange Nuts - pack of 10	Chrome



## Stainless Steel Nut Covers

Part No.	Description	Finish
ALCOVSS32	Alcoa Branded Nut Cover Suit Retro-Fit 32mm Nuts	Stainless Steel
ALCOVSS33	Alcoa Branded Nut Cover Suit Retro-Fit 33mm Nuts	Stainless Steel
BALGRIP	Alcoa Pliers for Stainless Steel Wheel Nut Covers	



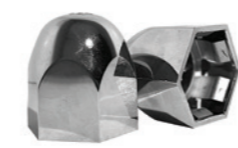
## Hug-A-Lug® Nut Covers for 1.5" Hex Nut (Ball Seat, with clamps)

Part No.	Description	Finish
A001551	For 1.5" Hex Ball Seat Nut, with clamps	Chrome



## ISO Retro Fit Sleeve Nuts Steer Wheels ISO Retro Fit Sleeve Nuts - Dacromet Treated

Part No.	Description
687632	M22 x 1.5mm - 32mm Dia/Hex Head Short Sleeve Nut - Single Wheel
687732	M22 x 1.5mm - 32mm Dia/Hex Head Short Sleeve Nut - Dual Wheel
B6142.30	M20 x 1.5mm Short Sleeve Nut for Single Steer Wheel
5784.32.00	7/8"-11 BSF Sleeved Nut for Single Mounting Scania with 32mm Bolt Holes
430732	2 Piece, 33mm Hex M22 x 1.5mm Right Hand Sleeved Capped Nut -78.5mm Height
430632	2 Piece, 33mm Hex M22 x 1.5mm Right Hand Sleeved Capped Nut -50mm Height



## Rear Wheels ISO Retro Fit Sleeve Nuts - Dacromet Treated

Part No.	Description
5781.32.00	M22 x 1.5mm Long Sleeve Nut for Dual Rear Wheels
5781.32.01	M22 x 1.5mm Long Sleeve Nut for LH Dual Rear Wheels (HINO)
B6143.30	M20 x 1.5mm Long Sleeve Nut for Dual Rear Wheels
5785.32.00	7/8"-11 BSF Sleeved Nut for Dual Mounting Scania with 32mm Bolt Holes

SEE MORE ACCESSORIES



## Cap Nuts for Ball Seat Wheels Outside Front Wheel Nuts

Part No.	Description
NF24-R	24mm x 1.5mm - Front, Right Hand Thread Wheel Nut
NF24-L	24mm x 1.5mm - Front Left Hand Thread Wheel Nut
37891R	1-1/8" x 16 - Right Hand Wheel Nut
37892L	1-1/8" x 16 - Left Hand Wheel Nut
NF 20_R	20mm x 1.5mm - Right Hand Wheel Nut
NF 20_L	20mm x 1.5mm - Left Hand Wheel Nut
SF18-L	Front Wheel Nut - LH 18mm
SF18-R	Front Wheel Nut - RH 18mm



## Inside Rear Wheel Nuts

Part No.	Description
5978R	3/4" x 16 & 1-1/8" x 16 Right Hand Inner Cap Nut
5978L	3/4" x 16 & 1-1/8" x 16 Left Hand Inner Cap Nut
NR20_R	20mm x 1.5mm & 30 x 1.5mm Right Hand Inner Cap Nut
NR20_L	20mm x 1.5mm & 30 x 1.5mm Left Hand Inner Cap Nut
SR18-L	Rear Inner Cap Nut - LH 18mm
SR18-R	Rear Inner Cap Nut - RH 18mm



## Grommet Seal Valve Stems

Part No.	Description	Length	Bend Angle
TR543C	2.50" - Suitable For European Wheels	2.50"	45°
TR543D	1.50" - Suitable For European Wheels	1.50"	60°
TR543E	1.00" - Suitable For 12.25" Wheels	1.00"	75°
TR544C	3.00" - Suitable For 88462X US Disc Brake Wheels Only	3.00"	45°
TR544D	2.00" - Suitable For Japanese Wheels	2.00"	60°
TR545D	2.50" - Suitable For D.C.N Budd Mount Alcoa Wheels	2.50"	60°
TR509	4.00" - Suitable For Old Style Budd Mount Wheels Valve in Well Base	5.00"	90°
60-MS-27N	Suitable For 88456X European Disc Brake Wheels Only		
000426	M22 x 1.5" 26mm E-Z Mount Sleeve		



## ULT36X Extensions and Stabiliser (see more page 2-3)

Part No.	Description	Finish
A000460	135 Degree extension	Valve Stem Extensions
A000470	6" extension	
A000480	1" oval stabiliser	Valve Stem Extension Stabiliser
A000490	Kit includes 2 x 135 Degree extensions, 2 x 6" extensions and 4 stabilisers for ULT36x dual drive position	Valve Stem Extension Stabiliser Kit

Extensions and stabilisers are sold separately.  
Extensions not required on steer position.

SEE MORE ACCESSORIES



Heavy Duty Chrome Accessories





**INNOVATION**  
IS IN OUR DNA


**Howmet Wheel Systems Australia**


18 Law Court, Sunshine, Victoria, 3020

1800 955 191

[www.alcoawheels.com.au](http://www.alcoawheels.com.au)

 [alcoawheels.sales@howmet.com](mailto:alcoawheels.sales@howmet.com)

 [alcoa\\_wheels\\_australia](https://www.instagram.com/alcoa_wheels_australia)

 [alcoawheelsaustralia](https://www.facebook.com/alcoawheelsaustralia)

 [Alcoa Wheels Australia](https://www.linkedin.com/company/Alcoa-Wheels-Australia)



DRIVING YOUR **BOTTOM LINE**.™

© 2021 All Rights Reserved Howmet

For warranty details visit: [www.alcoawheels.com.au](http://www.alcoawheels.com.au)

INNOVATING ALUMINIUM WHEELS FOR OVER 70 YEARS