



Alcoa® E-Z Mount Wheel Alignment Sleeves

Align Wheel Bolt Holes. Seat Break Drum. Prevent Stud Damage.

Alcoa Wheel's genuine E-Z Mount Wheel Alignment Sleeves were designed to support the wheel mounting process and assist in lining up wheel end components for ease of installation. Threaded on the inside to securely thread-on to studs, these mounting tools work on all steer, drive, and trailer axle applications with a 22mm diameter stud.

Instructions for Steer, Drive, Trailer Axle Applications with 22mm Stud

1. Install (2) wheel mounting tools across from each other before removal or installation of the wheel, as indicated in figures below.
2. For removal of wheel, this protects the studs from damage.
3. For installation of the wheel, install lug nuts according to recommended practice.
4. Once flange nut pressure is sufficient to keep the wheel and drum assembly snug against the hub, remove mounting tools individually as needed to follow installation pattern.
5. After mounting tools are removed, torque lug nuts to required levels.

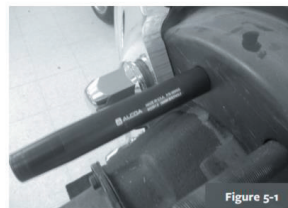


Figure 5-1

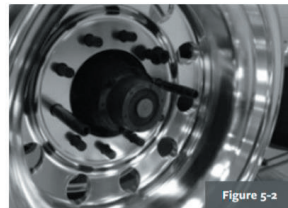
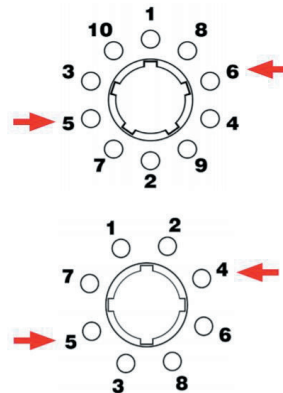


Figure 5-2



Part Number	Description
000426	Individual wheel alignment sleeve
407422	Wheel alignment sleeve kit (2)



WARNING

WARNING All wheel mounting tools must be removed before vehicle operation. Wheels that are not properly installed or maintained may not be safe.

Failure to follow proper wheel installation or maintenance practices may result in injury or death. Mounting Tool for Alcoa Wheels will not seat brake drums that have bolt holes larger than .980" in diameter.

Follow the proper wheel installation and maintenance practices as contained in the Service Manual for Alcoa Wheels. For additional copies of the manual and other useful items, available free of charge, or for the most recent updates, contact Arconic Wheel and Transportation Products at 800-242-9898 or on the web at www.alcoawheels.com



1616 Harvard Ave. Cleveland, OH 44105

1-800-242-9898

www.alcoawheels.com



© 2023 Howmet Aerospace Inc. The Alcoa trademarks are owned by Alcoa USA Corporation and used by Howmet Aerospace Inc. and its subsidiaries under license from Alcoa USA Corporation.



Wide Base Mounting Guidelines 22.5 x 14 Wheels

.98" Outset Mounting Position

In the .98" outset mounting position, the 84U60x uses finish options 1, 1DB, and 8. In this mounting position, the valve hole location is inboard, the valve direction is through the hand hole, and the wheel identification roll stamp with "0" OFFSET THIS SIDE OUT" is hidden as shown in Figure 2 below.

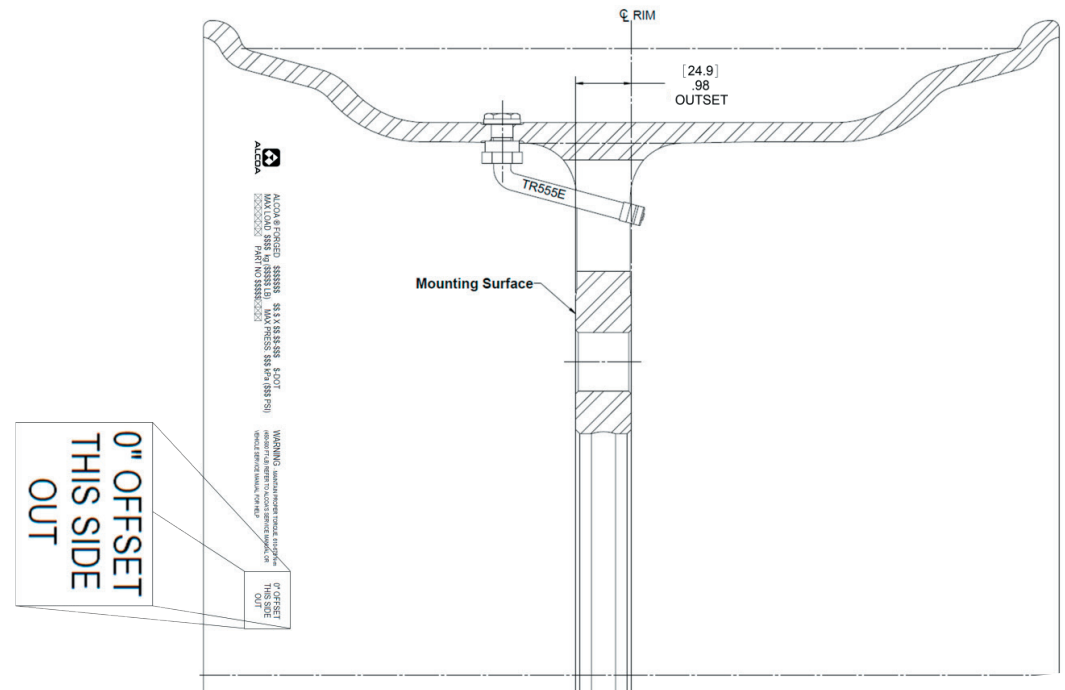


Figure 2 - (.98" Outset)



May 2016

Wide Base Mounting Guidelines 22.5 x 14 Wheels

2" Outset Mounting Position

Alcoa 22.5 x 14 wheel part number 84U62x has replaced 84362x. The 84U62x has a 2" outset and offers finish options 2, 2DB, 2DD, 7, 7DF, and 0DB. This wheel is designed to provide vehicles in OEM approved applications wider track width and greater stability than a dual setup while reducing the overall width of the vehicle. When mounting this wheel, the valve hole location is outboard, the valve faces out, and the wheel identification roll stamp is visible. Additional information has also been added to the roll stamp to identify mounting position. The roll stamp includes "2" OUTSET THIS SIDE OUT" as shown as shown in Figure 3 below.

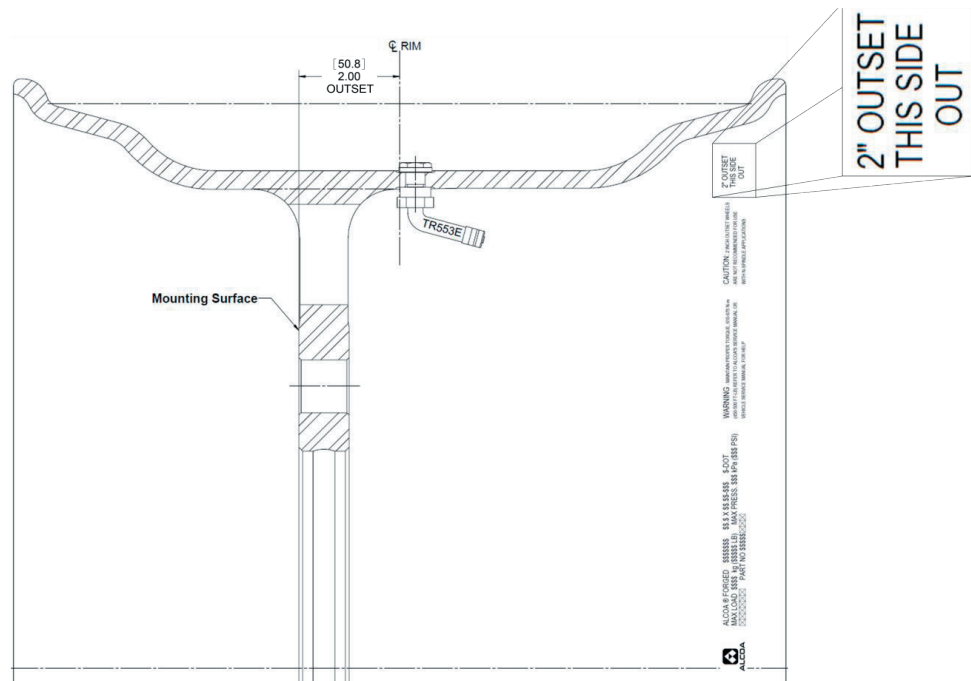


Figure 3 - (2" Outset)

Check with vehicle manufacturer or axle manufacturer before retrofitting to outset wide base wheels to ensure compatibility with axle and wheel end components.

Additional restrictions may apply, depending on factors such as spring center distance and suspension type. Contact the specific axle manufacturer to confirm load capacity for a given application. When mounting and servicing wheels, follow all safety precautions and regulations as described in the Alcoa Wheel Service Manual. If you have any questions regarding the correct wheel for a specific vehicle application or mounting clarification, please contact an Alcoa Sales Representative or call (800) 242-9898.



1616 Harvard Ave. Cleveland, OH 44105

| 1-800-242-9898

| www.alcoawheels.com

| [f](#) [v](#) [i](#) [in](#)

© 2023 Howmet Aerospace Inc. The Alcoa trademarks are owned by Alcoa USA Corporation and used by Howmet Aerospace Inc. and its subsidiaries under license from Alcoa USA Corporation.